

EVTRA NEWSLETTER

APRIL 2017



CONTACTING US

We are planning to have an email postbox on the website, but for now if **you wish to contact us about any of the items** email edwardleemusical@gmail.com from which it will be forwarded to the relevant person.

WARNING – GRADGRIND IS AFTER YOUR ENVIRONMENT!

Do you think you are lucky to live in a beautiful space like Elm Village? If so, then you need to know of some of **the threats and possibilities that are there RIGHT NOW.**

To imagine what is proposed

First, go to the Constitution pub (inside afterwards if you like) and look to your left down the canal. A few hundred yards away you will see a large building – the student accommodation on Camley Street, next to the Coop.

(While you are about it, look over the railway at the tower block on Agar Grove)

Threat 1: BANGOR WHARF

Now look across the road. Imagine that the student building is right in front of you, on the corner. That's what the developers (who of course don't live anywhere near here) want to put up – the Bangor Wharf project.

It that bothers you, contact Fiona Russell (fionarussell4@blueyonder.co.uk):for more information and how to do something.

And there is more...

Threat 2: THE UGLY BROWN BUILDING (you can't be serious...!)

Yes. This is it, on St Pancras Way.



Now look down the canal again towards King's Cross and in the distance you will see The Ugly Brown Building (that's its official name!). Well it may be ugly, but now put on your imagining cap again and think of the tower block in its place. No, this is not a few silly old pensioners panicking – it's in the official plan.You didn't know about it ? – well shame on you, you didn't go down to the canal on March 7th and looking carefully find that a small notice had been placed on the gate which used to lead up to Elm Village (what gate? where?...) that morning. It told you that you could just drop everything and go to a meeting that night. (We are sorry, but this is not "fake news" but all documented)

Mind you, you will get shopping, and you will be able to stay in the new hotel if you fall out with your partner - you could even work in the Ted Baker factory, if you fancy learning how the other (underpaid) half lives. TURN OVER FOR MORE...

Oh – and we didn't mention – **if you live on the other side of the canal bang goes your sunlight** – but then you can't have everything!

You should have received an invitation to consult, but as we have often found that many of our residents of all ages have by some mysterious chance not had such messages delivered to them, please note that you can go to the **Upper Room Greenland Street on Thursday 20 April (4.30-8.30) or Saturday 22 April (11.00–2.30)** or you can go to their website (www.uglybrownbuilding.co.uk) from April 20th.

AND NOW FOR THE GOOD NEWS!!

CAMLEY STREET NEIGHBOURHOOD FORUM Sounds bo-o-o-ring but it isn't!

The Camley Street Neighbourhood Forum (**CSNF**) is concerned with an area which includes Elm Village. It has produced a Neighbourhood Plan. Aims include affordable premises and homes, a green policy, activities and buildings related to the expressed needs of the local community. Details are on the website. (www.csnf.org.uk).

As a practical means of achieving these aims they have set up another organisation, The Camley Street Sustainability Zone (CSSZ) which is concerned with the land on Camley Street between the road and the railway. It has formed a company CSSZ Ltd. This is a registered non-profit corporation limited by guarantee, and hence is legally protected. They believe that they have in fact secured enough and suitable backing. They believe that they have a realistic, viable but different approach to the typical developer. Details at www.cssz.london.

There is a YouTube clip <https://youtu.be/Lhhcfas1a-8> [26:30 to 35:00] which gives a 5 minute summary.

The Camley Street Neighbourhood forum AGM will be held on May 18th at the Constitution pub and a full progress report will be given then.

And another option - CANALSIDE LEISURE AMENITY - FREE !!!

You may not know, but we have a SOUTH SPACE. It is by the canal (next to the Constitution)

Several residents have said that it seems a pity that this space is derelict and not being used for the benefit of residents. So they wish to put a scheme for development to PfP. One idea which could be very popular and useful to residents of all ages is an outdoor gym (for details see

<http://www.camden.gov.uk/ccm/content/leisure/sports-and-activities/outdoor-gyms/>).

If you think exercise is only for very fit young people, hobble down to the Polygon Space, next to Edith Neville School (near the British Library). You will be amazed to see Muslim mums and grannies in full traditional dress sedately but effectively improving their health on the machines there!

There will be further opportunities to have a say about this idea, but for now, if you have an idea how it should be used, send us an email. The allotment has been a great reclaiming of dead space, which is also used by residents to have a barbecue or just a glass of wine. This could be as good.

CONTACTING US If you wish to contact us about any of the items email edwardleemusical@gmail.com from which it will be forwarded to the relevant person.

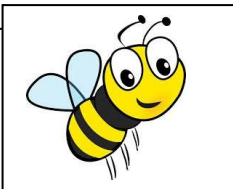
CHILD GARDENERS WANTED

Grow your own children at the allotment! Well of course we aren't planning to grow children – yet – there is one gooseberry bush but it is still very small.

But Mike Jackson is very keen to create opportunities for children to explore the world of gardening and plants, and to grow things. He feels that it is immensely educational for them as well as being a great deal of fun. It also helps them to learn about and appreciate their environment.

In the first instance the sessions would be for parents/carers with the children, who can be of any age.

If you are interested, you can either speak to Mike when you see him, or you can send us a short email indicating your interest which will then be forwarded to him.



GARDEN SOCIETY

In the autumn there was a big clear up, and together with Mike Jackson,

the allotment is

looking increasingly

impressive. It is

planned to put a

page on the website

in the near future, giving news and enabling exchanges

between interested residents.

At present the plots are all taken, but you can ask to be put on a waiting list.

And everyone is welcome to attend the sessions which Mike Jackson gives – come along and improve your windowbox!

Email as indicated elsewhere.



BUZZ WORDS

The little buzzers are hard at work again on this year's crop of honey. The beekeepers are very pleased because they underwent an inspection recently and came out as "very satisfactory". If you are interested in this project, send us an email and it will be forwarded to them.